

PENNYRAIL

June 2014

Volume 18 Number 6



Next Meeting

Monday June 16, 2014 @ 7:00pm
Former L&N Depot
38 W. Arch St. Madisonville, KY

Program & Refreshments by:
Donny & Betty Knight

**Don't forget to bring something
for Show & Tell!**

NRHS Mission Statement

The National Railway Historical Society promotes railway heritage preservation and educates its members and the public about rail transportation, its history and impact, with a focus on North America.

Objectives:

1. To foster the experience of rail transportation
2. To develop and expand educational services and programs
3. To build and maintain archives, to encourage and to support archival activities, and to disseminate information in archives
 - A. To increase collaboration between existing archives
 - B. To develop listing of National and Chapter archives
4. To support preservation of memorabilia and artifacts
5. To facilitate association and networking
6. To maintain and grow the organization

In this issue...

- Tom Johnson's "The Prez Sez"
- Tom Johnson's DVD Review
- The Project Corner

Western Kentucky
Chapter, NRHS, Inc.

111 Reed Pl.
Madisonville, KY 42431

* * * * *

President
Tom Johnson

Vice President
Steve Miller

Secretary Treasurer
Wally Watts

National Director
Wallace Henderson

Director at Large
Thomas Bryan

"PENNYRAIL" is the
official publication of
the Western Kentucky
Chapter NRHS.
Send news notes,
historical notes and
other rail information to:

Editor
Matt Gentry

5777 Spring Corner Rd
Newburgh, IN 47630
(812) 598-0983

email:
info@westkentuckynrhs.org

June's Discussion Topic

"Why does carload freight make more revenue per unit than intermodal or unit freight?"

This question was submitted by Thomas Bryan.

If you have a topic of discussion that you would like to have gone over during meeting time, please submit it to Matt G. at info@westkentuckynrhs.org

Please send your digital photos and stories to info@westkentuckynrhs.org OR mail to;

**Matt Gentry: 5777 Spring Corner Rd.
Newburgh, IN 47630**

The Prez Sez

President Tom Johnson

Greetings, fellow Chapter members.

We had a great time at our May Chapter meeting and a big thanks goes out to our Hopkinsville members who hosted it. Thanks for the good job in grilling hamburgers and hotdogs for us, Bill! They hit the spot.

Chuck Hinrichs entertained us by telling us how he got to be a rail fan and how he combined his love of trains with his passion for photography. Good job, Chuck!

Matt reports that we do not have an idea for our discussion at the upcoming meeting. Why are you guys not submitting ideas? Hopefully, someone will come up with one before the Pennyrail is published.

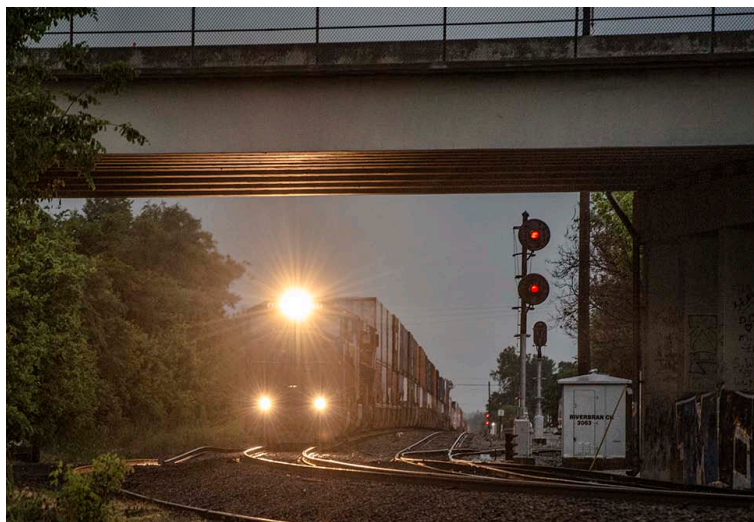
We'll see you Monday night June 16th at 7:00 PM at the depot.

Your Prez
Tom Johnson



Members gather and chat all things trains outside the Hopkinsville Depot before the May meeting on Monday, May 19, 2014.
-Chuck Hinrich

CSX #33 leads a southbound train by the Hopkinsville Depot on May 19, 2014.
-Chuck Hinrich



June 4, 2014 - CSX Tote Train Q026 passes the signals at River Branch in Henderson, Ky as it heads North on the Henderson Subdivision. -Jim Pearson

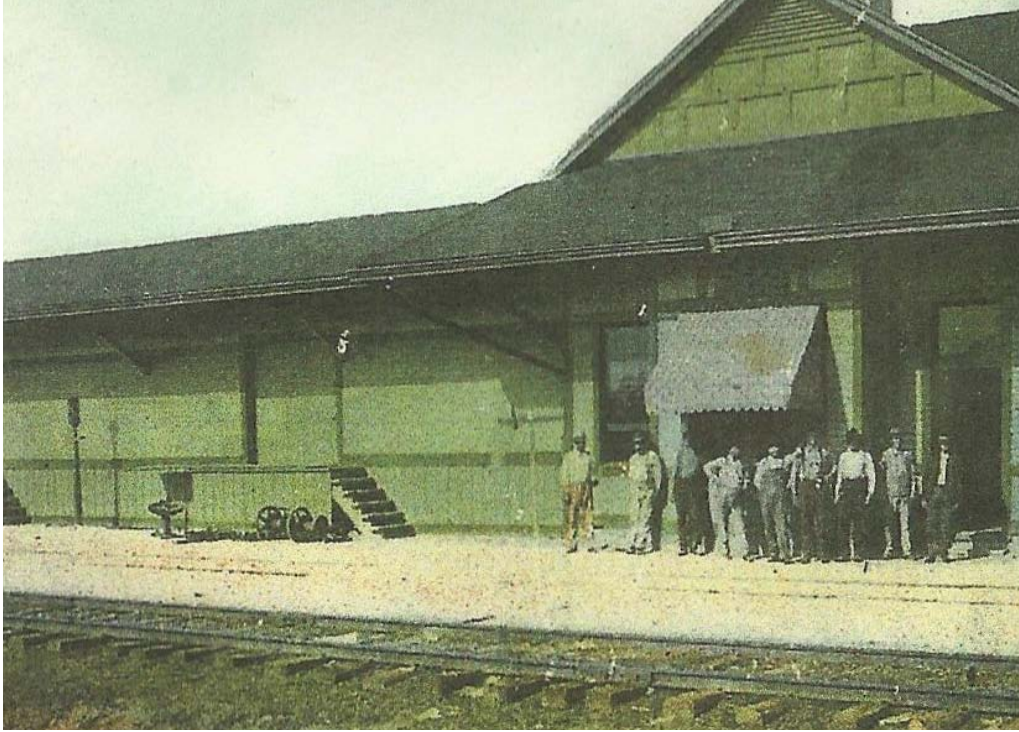


Armour Yellow everywhere! Multiple UP locomotives are spotted outside the engine shops in North Platte Nebraska in 2004. -Donny Knight



UP1995 is seen heading east/south out of Robert Young rail yard in Elkhart, IN late in the evening of May 31, 2014. Even though I have a photo of UP1995, I'm still excited I got to see it again, especially in a night setting!
-Matt Gentry

Mystery Location



Touching on our discussion topic last month, seen here is an L&N depot in Kentucky. Do you know where??

Take your best guess!

Submitted by Donny & Betty Knight

Remember that guesses will be taken at meeting time and thrown into a hat. The first name drawn with the correct answer will get first pick of the items that are up for raffle.

Minutes Summary of May 2014

- MINUTES: Approved of the April meeting
- TREASURERS REPORT: Approved
- DIRECTORS REPORT: None.
- ACTIVITIES REPORT: None
- OLD BUSINESS: None
- NEW BUSINESS: Don brought a print of the Hopkinsville depot which he donated to the station for display. No other new business. A reminder-the first Friday night live will be on 13th June at 6PM at the old court house front lawn on the left front corner. We need a show of strength! Rick says a work session is needed at the Madisonville Depot. Date will be announced later.
- SHOW & TELL: Chuck brought 2 interesting books as his item of interest. Matt brought some date nails. He gave a report and information on the Indiana Southern. Chuck gave an interesting program on his many and varied travels and rail-fan trips throughout the country.

Many thanks to Bill for his annual hamburger grill and other delicious foods!

• Those present were:

- | | | |
|-----------------|-------------------|------------------|
| 1. Wally Watts | 7. Thomas Bryan | 13. Rick Bivins |
| 2. Birk Fischer | 8. Jim Pearson | 14. Jim Bryan |
| 3. Matt Gentry | 9. Tom Steiner | 15. David Millen |
| 4. Steve Miller | 10. Rich Hanes | 16. Bill Ferrell |
| 5. Donny Knight | 11. Chuck Hinrich | 17. Blair Terry |
| 6. Betty Knight | 12. Bob Moffet | 18. Don Clayton |

Financial Statement of May 2014

Beginning Balance		\$2665.53
Income:		
	Nat. Dues Rec.	\$55.00
	Chpt. dues Rec.	0.00
	Donations	\$40.00
	Other/Jan. Raffle	0.00
Total Income		\$95.00
Expenditures		
	Nat. Dues Paid	0.00
	Postage	0.00
	Supplies	0.00
	Other; Video Projector	\$250.00
Total Expenditures		\$250.00
	Petty Cash	\$45.10
	Bank Balance typo error	\$2431.63
		<u>\$2476.73</u>
		\$2510.53
		<u>\$33.80</u>
Ending Balance		\$2476.73

Membership Stats:

Beginning Membership	41
National Members Added	0
National Members Deleted	1
Chapter Only Members Added	0
Chapter Only Members Deleted	0
Ending Membership	40

Presented by Wally Watts, Treasurer

Tommy Johnson Presents: **RAIL FLICKS**

Norfolk Southern Heritage Vol 1 Family Portrait

Producer: RailTrek Media
Format: Widescreen DVD
Playing Time: 1 Hr 46 Min

Purchased From : Trainvideodepot.com
Date Purchased: 5/15/14
Price Paid: \$23.95

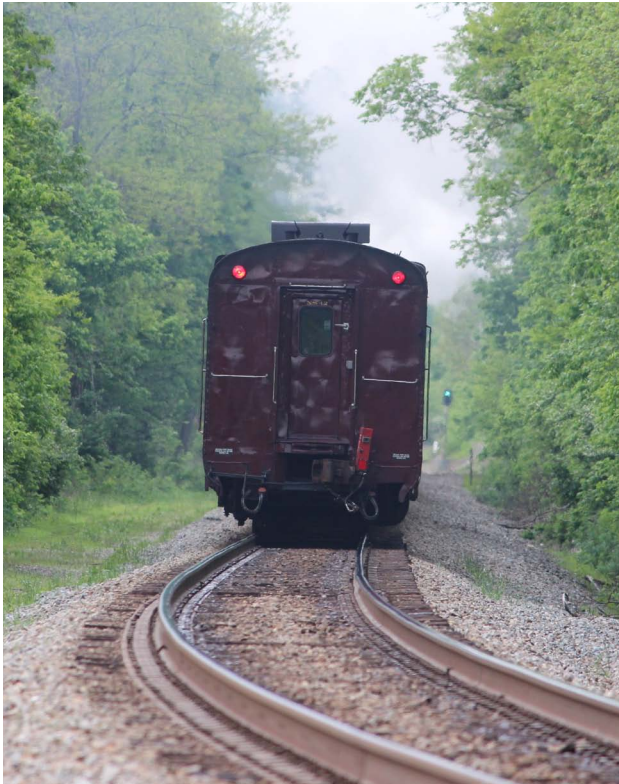
This is an excellent railroad video! It is a beautifully illustrated history lesson that teaches us how today's Norfolk Southern Railway came to be. It traces the mergers that have occurred over the years and shows locomotives with shiny new paint jobs in their pre-merger livery.

This was my first purchase of a RailTrek production

and I am extremely pleased with the quality. The image quality is fantastic, the format is wide screen, maps are used to show the routes of the individual pre-merger lines, and a brief history is given for each of the old railroads that were merged into the Norfolk Southern. If this is typical of RailTrek videos I will certainly be buying more of them in the future.

Southern #630 Passes through Walton KY

Photo's by Steve Gentry



THE PROJECT CORNER

CHAPTER CLEANS UP MADISONVILLE DEPOT

All photos by Rick Bivins

A discussion was held at the May meeting of setting a work day to clean up around the former L&N Depot in downtown Madisonville. In discussion with Rick Bivins, he and I decided upon a date of Saturday, June 7th at 9am. Thankfully it wasn't an overly hot day! A lot was accomplished that needed to be done. The overgrown bushes on the south side of the building were cut out, new spindles were installed on the wheelchair ramp, weeds were cut back, the signs were sanded in preparation for new paint around the trim, light bulbs were moved around and installed for better lighting inside, and general clean up was performed. Although not finished, a huge step forward was taken and the depot looks better!

A special thanks to Rick Bivins, Steve Miller, Keith Kittenger, Donny Knight, Rich Hanes, Wally Watts, and Jim Kemp who helped out during the day!

-Matt Gentry





Above: June 5, 2014. It looks like an ex ICE locomotive, in fact I thought it was until Rick Bivins asked if I saw the herald on the front! Turns out it was a former Alaska RR locomotive!
Seen in Morton's Gap
-Matt Gentry



Q026 hit a chicken truck between Nortonville and Morton's Gap on 5/29/14. No one was hurt, even the chickens seemed ok. Remember, never play chicken with a train...
-Thomas Bryan

PENNYRAIL is your publication. If you have photographs or other material of current or historical interest that you would like to share with Chapter members, your editor would appreciate hearing from you. Your material will receive the best of care while being readied for publication. Your help is appreciated.

Matt Gentry, editor

As railfans we are often at trackside and in position to observe emergency conditions that could affect railroad safety or security. Keep these numbers handy to report incidents.

BNSF	800-832-5452
CN/IC	800-465-9239
CSX	800-232-0144
NS	800-453-2530
UP	888-877-7267
Amtrak	800-331-0008

National Railway Historical Society

www.nrhs.com

Railway Preservation News

www.rypn.org/

Kentucky Railway Museum

www.kyrail.org/

Indiana Railway Museum and French Lick Scenic Railway

www.indianarailwaymuseum.org

Illinois Rr Historical Society

<http://icrrhistorical.org/>

Illinois Railway Museum

www.irm.org/

Tennessee Central Railway Museum

www.tcry.org/

<http://www.westkentuckynrhs.org/>

PENNYRAIL

Matt Gentry; editor
5777 Spring Corner Rd.
Newburgh, IN 47630